

# Simplify task management and prioritize work in a paperless shopfloor

Alexander Pohl  
Arvato Systems GmbH



**25 %**


of companies from the overall economy work primarily with paper-based processes.



**69 %**

of companies confirm that an important aspect of digital processes is more efficiency and transparency.

# Challenges



**Workforce Adaptation**




**Regulatory Compliance**



**Data Management**

**Cost and ROI** 

**Cybersecurity** 

**Integration with Legacy Systems** 

# Solutions



**Advanced Data Management**



**Seamless Integration**



**User-friendly Interface**

**Cybersecurity**



**Compliance and  
Quality Assurance**



**Support and Training**



# Effectively counter the challenges of digitalizing shopfloor activities

## Solution Requirements

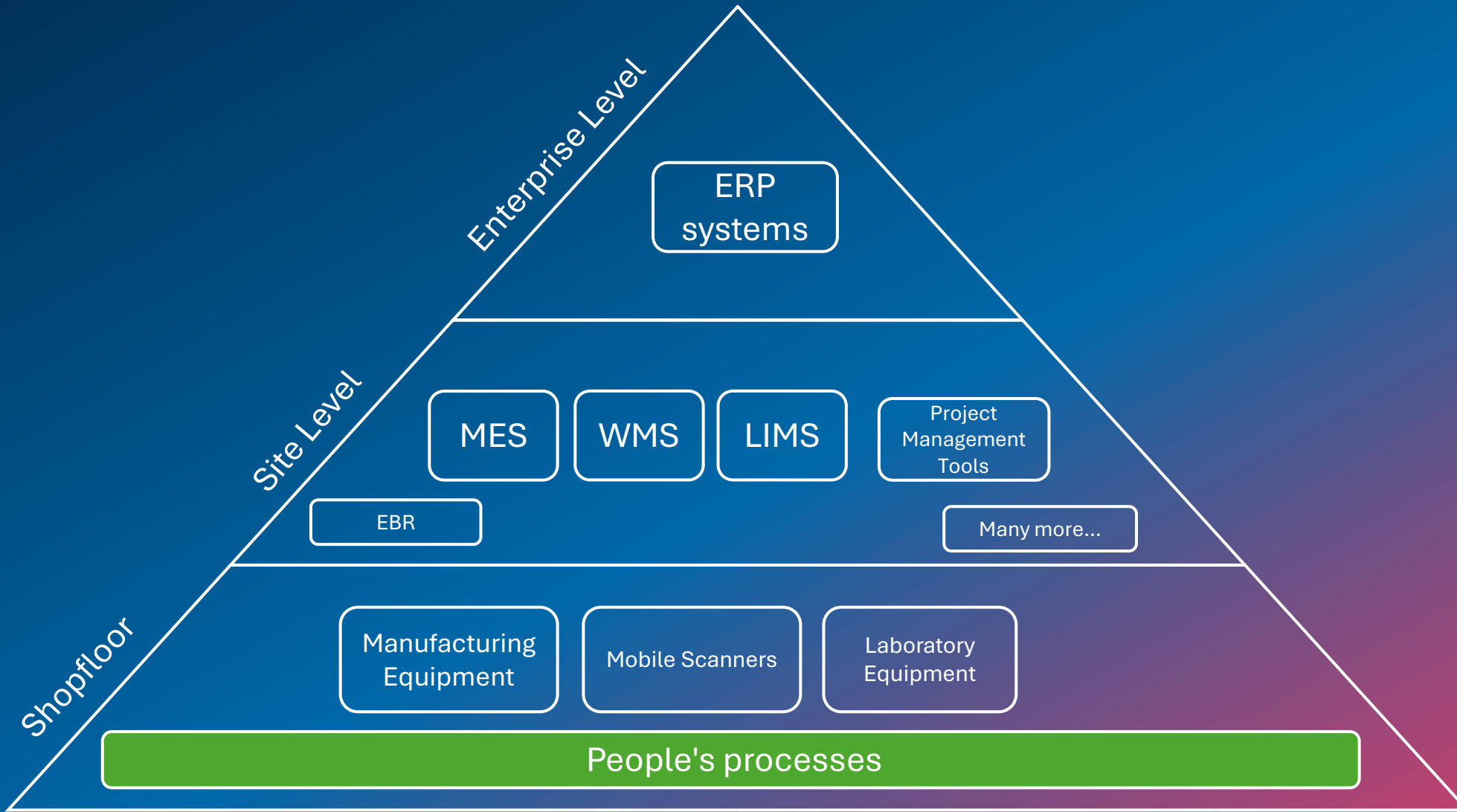
- Advanced Data Management
- Seamless Integration
- User-friendly Interface
- Cybersecurity
- Compliance and Quality Assurance
- Support and Training



CAPEX and OPEX

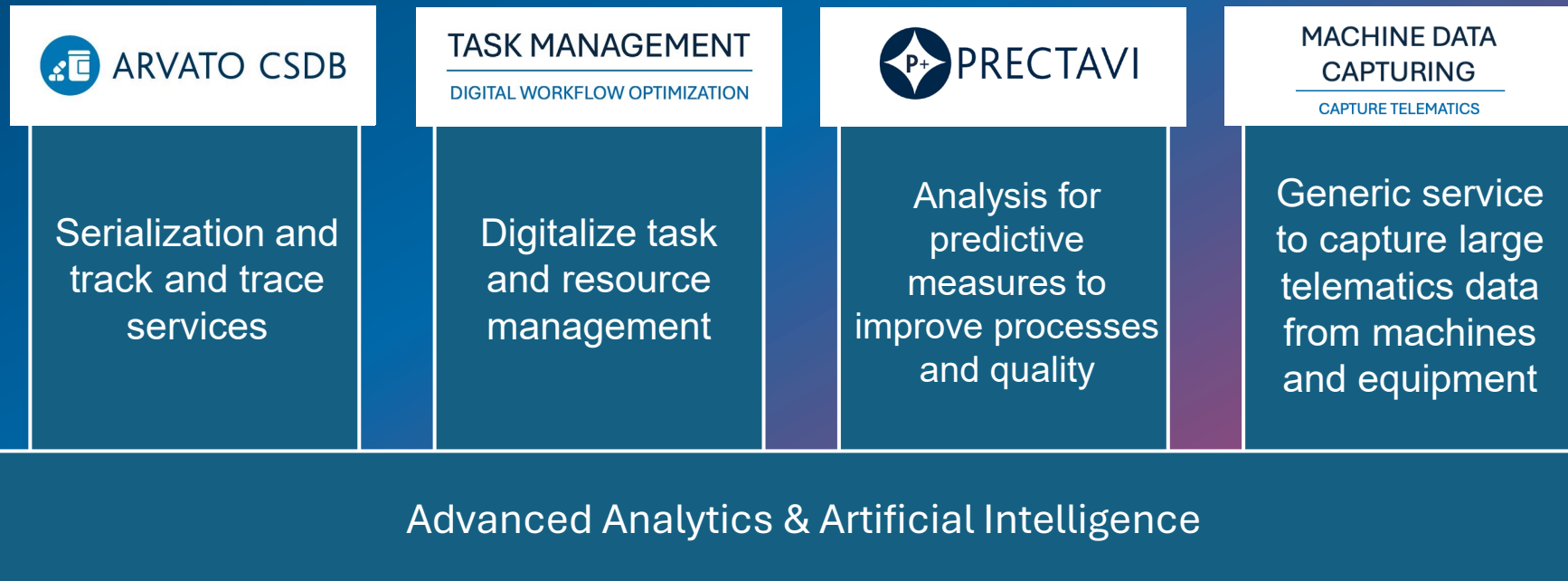
## Value add

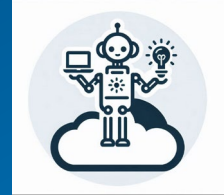
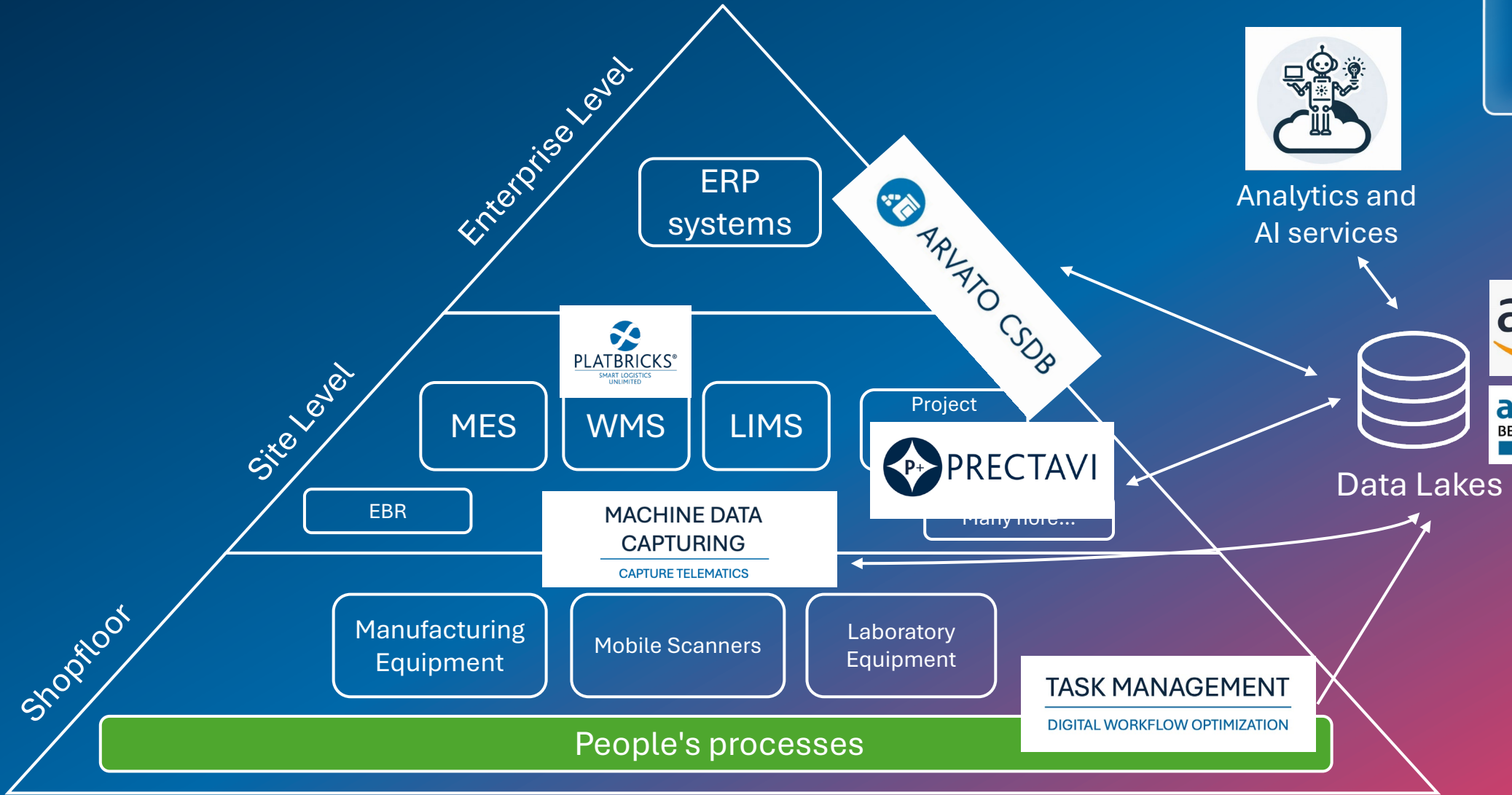
- Increased efficiency
- Improved quality control
- Cost reduction
- Better resource utilization
- Enhanced flexibility
- Enhanced Data Transparency



# Vision

We offer a platform for the life science and pharmaceutical industry consisting of modular services that support you in the digitalization of your daily operations.





Analytics and AI services



Data Lakes





# Task Management

Digital Workflow Optimization

# Functionalities

# Use Case examples



Maintenance Management

Support your employees with digital instructions and checklists. Digital recording of the maintenance activities including time tracking and change records. Track what spare parts have been changed incl. date and time. Use the data for Continuous Improvement or TPM.



Gemba Walk

Support your Gemba Walks with digital recording of improvements and subsequent identification of measures directly in a digital system based on a digital checklist. Create follow-up tasks without media break. Prioritize and assign directly follow up activities.



Continuous Improvement

Create easily a digital PDCA formular. Central collection, evaluation and assessment point for ideas from employees and management. Evaluations and results are shared transparently and openly with employees in order to keep employee motivation high to submit further ideas.



Deviation Recording

Record deviations on the shopfloor easily and efficiently with digital checklists and formulars. Improve the documentation quality with mandatory fields and capturing of photos, scans, etc. Easy creation of reports and tracking in digital logbooks.

# A look into the system

Task Management
Task
Filter
+ New

**Catharina Beschmann**  
 BESC014  
 SHOW CASE

Portal

Task Management

Task

Template

Hours

Reporting

Settings

✓
Mine

Task Template	Name	Location Group	Assignee	Due Date	Priority	Status Changed
TASK-89	Broken door handle Defects	Bielefeld	YAREN	09/10/2024	=	Todo 09/05/2024 14:26
TASK-83	Gemba Walk Gemba Walk (big round)	Bielefeld	BESC014	08/31/2024	=	Completed 09/05/2024 14:26
TASK-100	Gemba Walk Gemba Walk (big round)	Gütersloh Production	KAMP13		=	Todo 09/05/2024 14:22
TASK-98	Gemba Walk Gemba Walk (big round)	Berlin Production	POHL084	09/13/2024	=	In Progress 09/05/2024 14:22
TASK-108	Weekly Maintenance - B-001-K Weekly Maintenance - B-001-K	Berlin Production	POHL084	09/06/2024	=	Todo 09/05/2024 14:22
TASK-109	Weekly Maintenance - B-001-K Weekly Maintenance - B-001-K	Bielefeld Production	BESC014	09/13/2024	=	Todo 09/05/2024 14:22
TASK-112	Weekly Maintenance - B-001-K Weekly Maintenance - B-001-K	Gütersloh Production	KAMP13	09/13/2024	^	Todo 09/05/2024 14:21
TASK-99	Gemba Walk Gemba Walk (big round)	Berlin Production		07/29/2024	=	Completed 08/07/2024 15:12
TASK-86	Maintenance Weekly Maintenance - B-001-K	Bielefeld Production	BESC014	07/26/2024	=	Completed 08/07/2024 15:09

# A look into the system

The screenshot displays the 'Template' configuration interface for a task named 'Weekly Maintenance - B-001-K'. The interface is divided into several sections:

- Left Sidebar:** Contains navigation options: Portal, Task Management (selected), Task, Template, Hours, Reporting, and Settings. A user profile for Catharina Beschmann is visible at the top.
- Header:** Shows 'Task Management' and 'Template' tabs. The current task is identified as 'Weekly Maintenance - B-001-K'.
- Main Editor:**
  - Description:** 'Weekly Maintenance - B-001-K'
  - Date and Time:** Fields for scheduling.
  - Location:** 'Bielefeld' (dropdown menu).
  - Machine:** 'B-001-K' (dropdown menu).
  - Maintenance or Inspection?** Radio buttons for 'Maintenance' and 'Inspection'.
  - Whole Machine:** A section for defining machine-wide activities, featuring a small image of a machine.
  - Audit:** A table for recording audit results for 'Cleaning', 'Damage', 'Safety', and 'Power supply', with radio buttons for 'Unknown', 'Yes', and 'No'.
  - Power Line / Electrical Installation:** A section for defining electrical tasks, with a checkbox for 'Checking the cables'.
- Right Panel (Details/Options):**
  - Meta Information:** Fields for 'Description' and 'Status' (set to 'Active').
  - Default Values:** Fields for 'Assignee', 'Group' (set to 'Production'), 'Priority' (set to 'Medium'), 'Location', and 'Plan Time' (set to '2.00').
- Bottom:** Includes a 'Logout' button, version information 'Version RESOURCEPLANING-SNAPSHOT (Integration)', and 'Save' and 'Cancel' buttons.

# Solutions



**Advanced Data Management**



**Seamless Integration**



**User-friendly Interface**

**Cybersecurity**




**Compliance and  
Quality Assurance**




**Support and Training**




# Task Management


 **Advanced Data Management**

 **Seamless Integration**

 **User-friendly Interface**

**Cybersecurity** 

**Compliance and  
Quality Assurance** 

**Support and Training** 

# Thank You for Your Attention!

